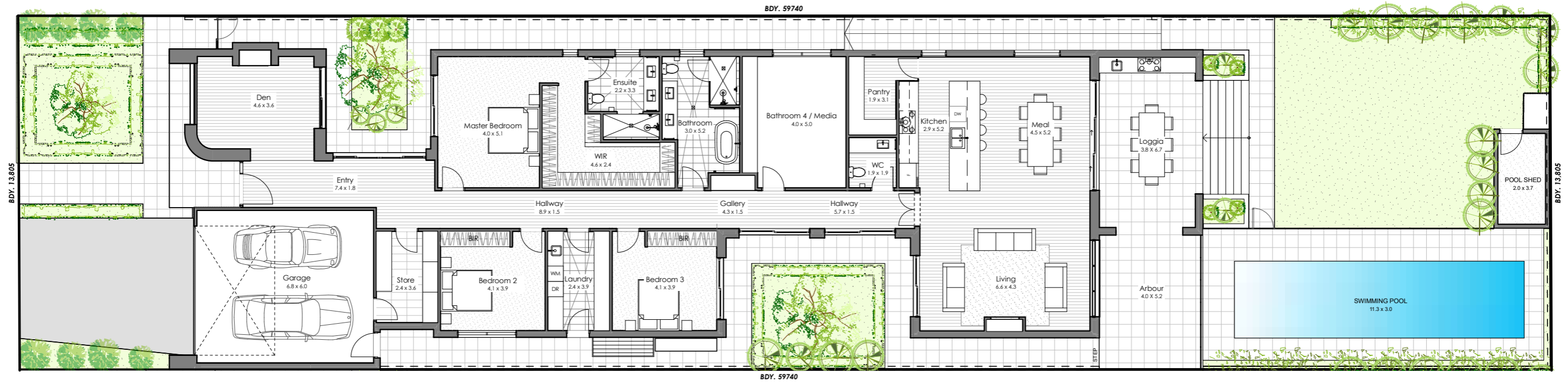


CHURCH TERRACE



| | |
|---------------------|---------------------|
| SITE AREA | 824.7m ² |
| GROUND FLOOR LIVING | 310.6m ² |
| GARAGE | 41.1m ² |
| LOGGIA | 29.5m ² |
| ARBOUR | 16.3m ² |
| PORCH | 4.0m ² |
| TOTAL | 401.5m ² |